

# Pest Control Glue

(Rats, snakes, lizards, cockroaches and all kinds of pests control glue)

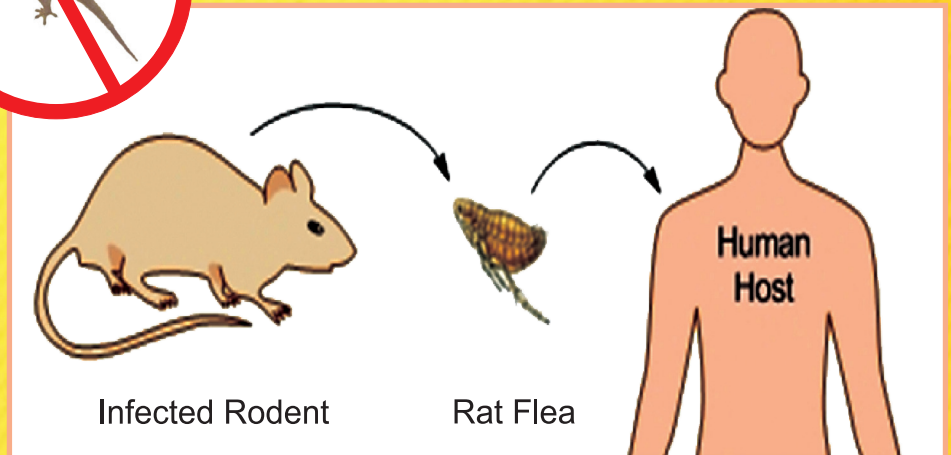
## Why do you need to control pests??

Pests like rats, cockroaches, lizards, and bugs bring bacteria, viruses and diseases, Pests which spoils your and to your family's health and wealth

## What are the damages and diseases caused by rats and pests?

### Disease

Pests are known to carry diseases like **Hantavirus, Lyme disease, Colorado Tick Fever, Babesiosis, Salmonella, and Rat - Bite Fever....etc.**



(Symptoms: Fever, fatigue, muscle aches, diarrhea, abdominal pain, nausea and vomiting)

### Damage

Pests can cause considerable damage not only to your health but also agricultural crops, cloths, furniture at home and office, books and cables and also your buildings (by digging unwanted pits). Food poisoning caused by the pests hampers the health of small kids. Food Corporation of India (FCI) estimates show that 15%-30% damage occurs every year by Pests.



**SRI SAI LAMA**  
Exim Private Limited

## How to Use Pests Trap Mouse Glue??

- Use scraper to spread the glue on a plywood or cardboard equally and widely.



- Put baits at the center of board such as peanuts, bread pieces or meat.
- Keep the board at a Place where the rats and pests are frequently located (trash can, mouse hole, drain pipe, ware house....etc.)

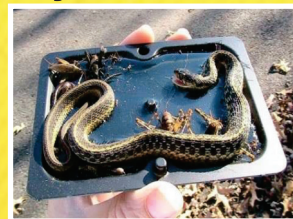


## Useful Tips:

- To remove glue contamination use few drops of edible oil, lemon juice or orange juice on the contaminated area. Rub it for seconds and wash with soap and water.
- Apply thick layer of glue on any substance for better and effective trapping of rats and snakes and thinner application for lizards, cockroaches and other kind of flies trapping.

## Why should I use Pests trap mouse glue??

- **Super effective and cheapest way to catch mouse and pests!!!**
- **Easy to use!!!**
- **100 % Green and Non-Toxic!!**
- **Disposable and environmental friendly!**



### Caution:

- **Keep out of reach of the children!**
- **Avoid contact with skin or eyes!**
- **Remember it is not edible!**



**SRI SAI LAMA**  
Exim Private Limited